



Bandbreiten regionaler Klimaprojektionen für Sachsen hinsichtlich relevanter Kenngrößen für die Klimafolgenabschätzung

Philipp Körner

Dresden, 09.12.2014



Gliederung

Daten

Methode

Ergebnisse

- Beispiel
- Temperatur
- Niederschlag

Daten

Ein Datensatz mit beobachteten Werten

153 simulierte Datensätze, davon:

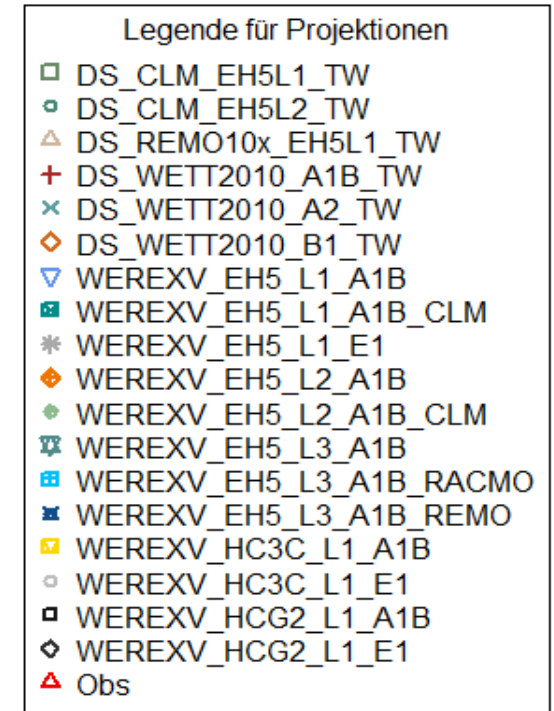
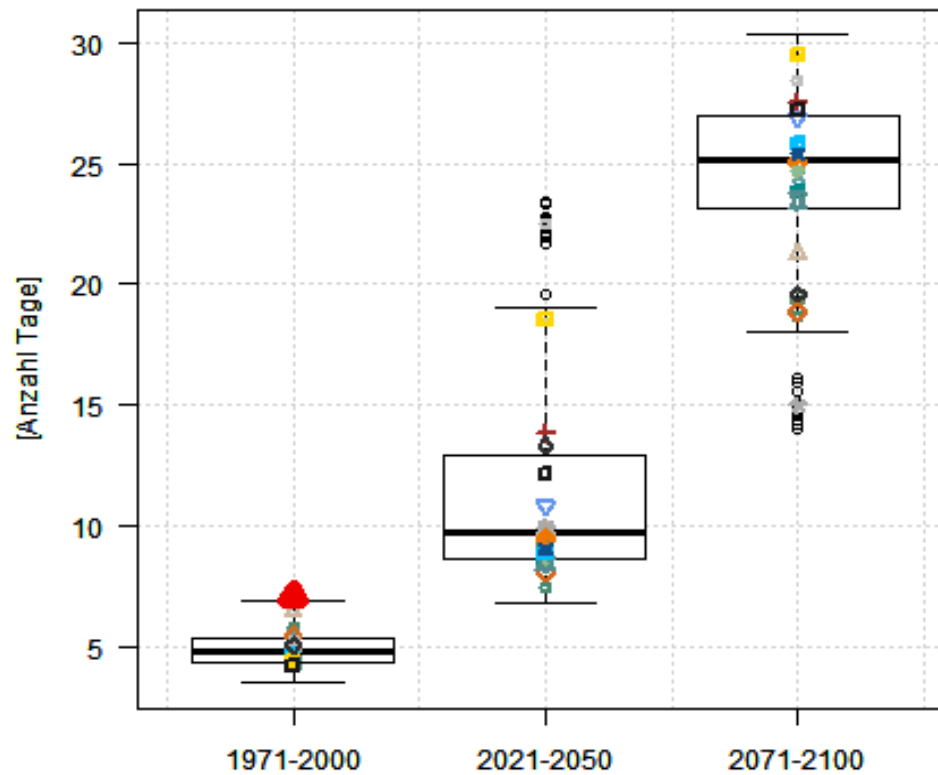
- 3 WETTREG2010 mit je 10 Realisierungen
- 12 WEREXV mit je 10 Realisierungen
- 3 dynamische Modelle (2 CLM, 1 Remo) für ausgewählte Stationen

- 192 sächsische, 6 benachbarte Stationen

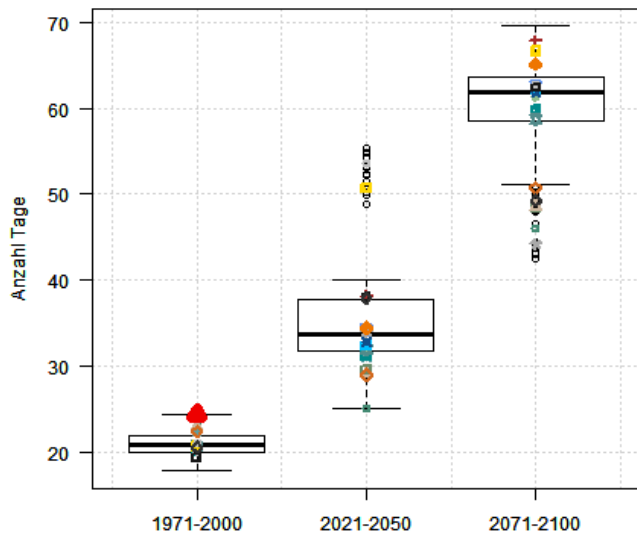
Methode

- Berechnung von WMO-Indizes für Temperatur und Niederschlag
- Basis: Jahre oder Monate
- Aggregiert auf Klimanormalperioden
- Daten als Grundlage für grafische Darstellung als Boxplots

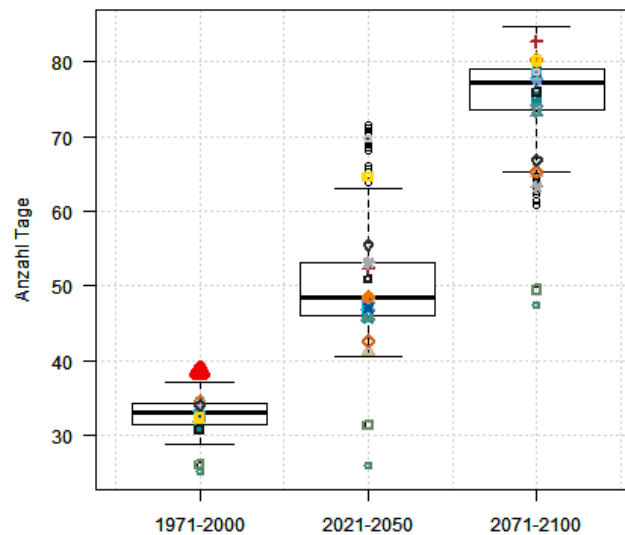
Beispiel: Heiße Tage Dresden-Klotzsche



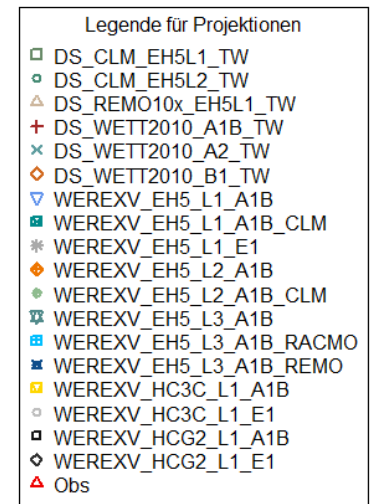
Sommertage



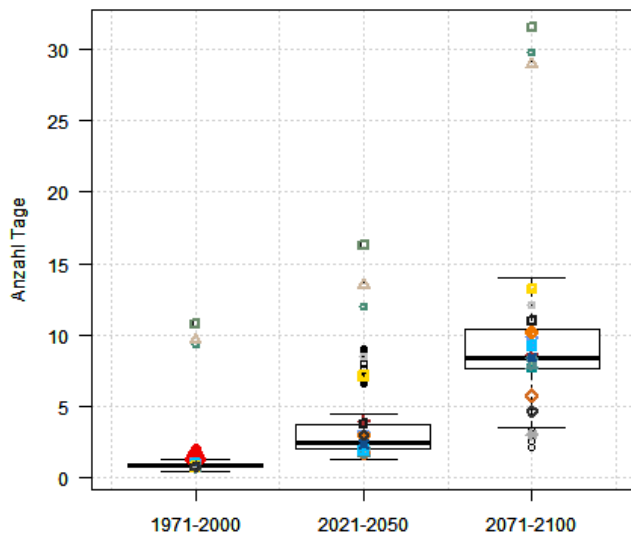
Chemnitz



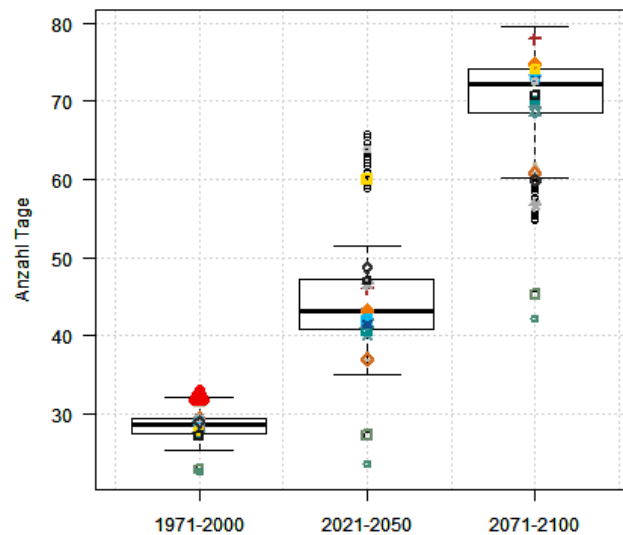
Dresden-Klotzsche



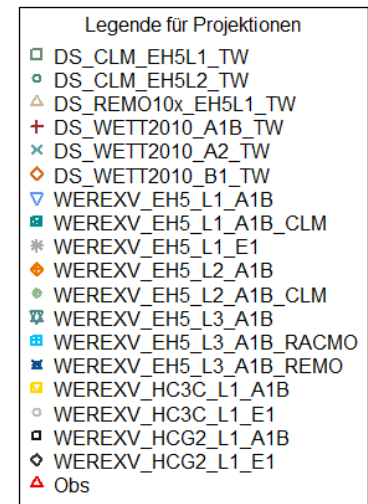
Sommertage



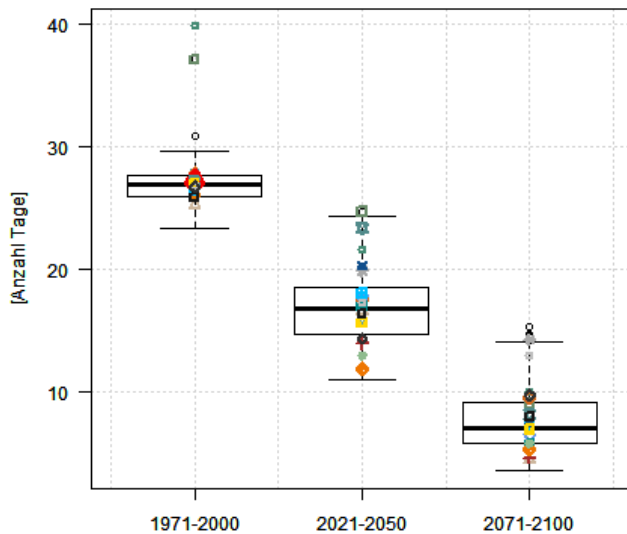
Fichtelberg



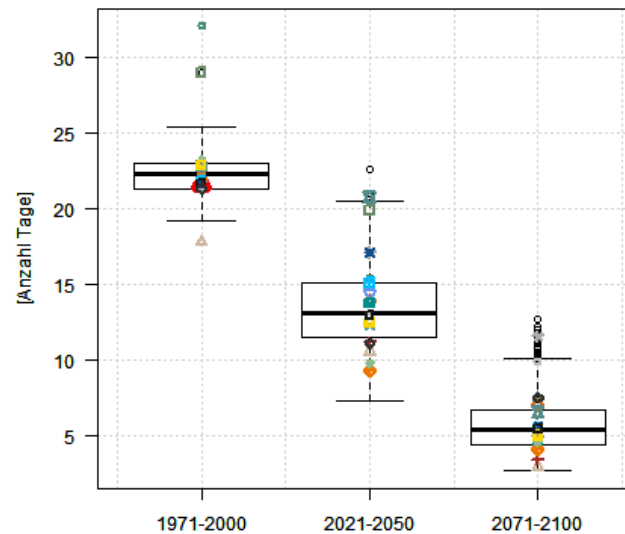
Görlitz



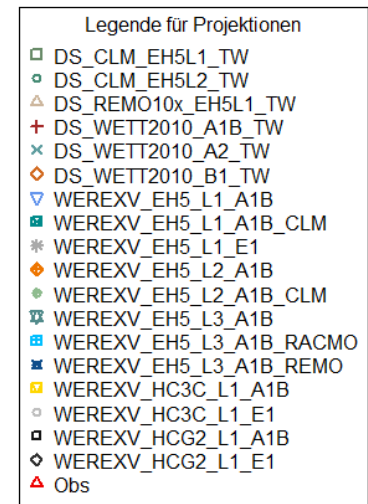
Eistage



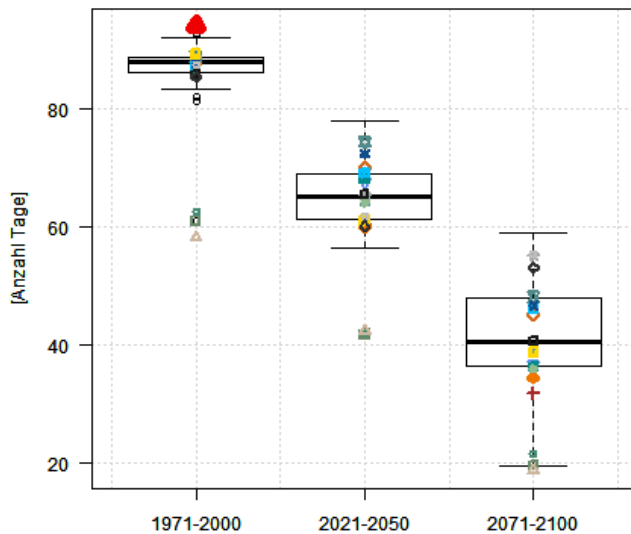
Chemnitz



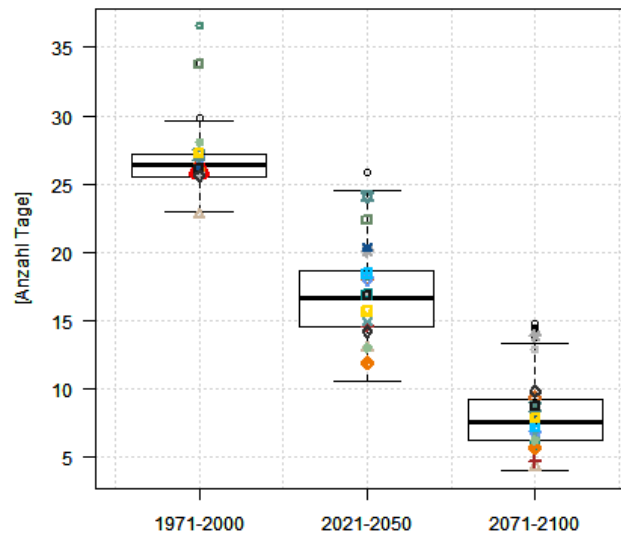
Dresden-Klotzsche



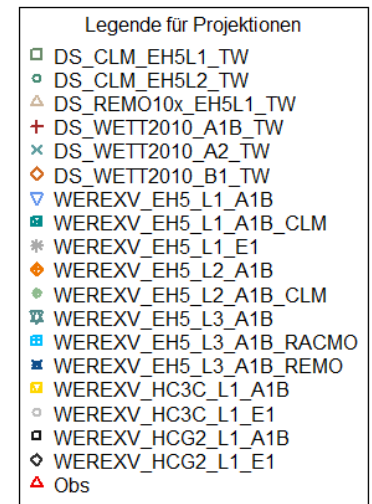
Eistage



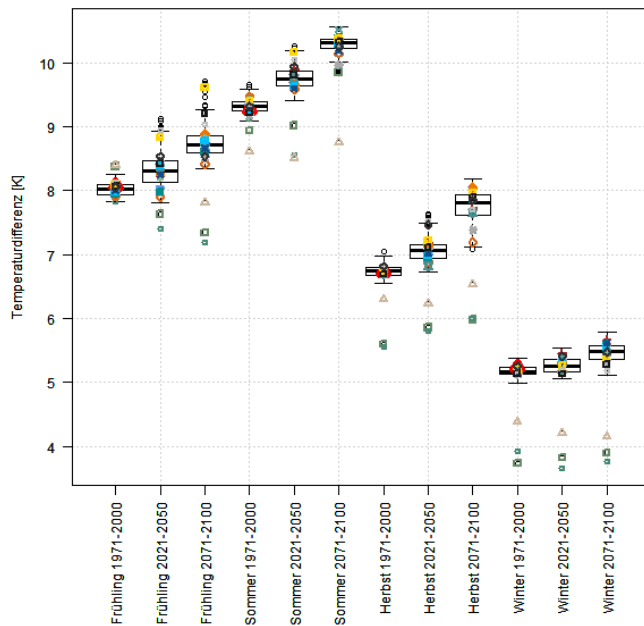
Fichtelberg



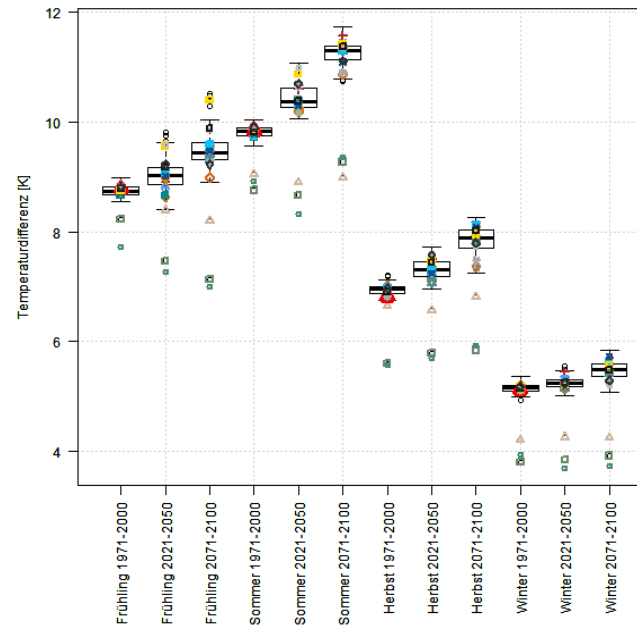
Görlitz



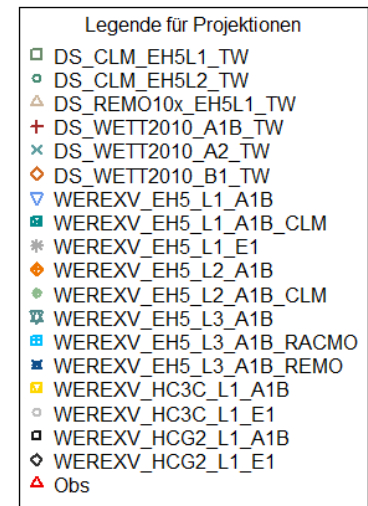
Tägliche Temperaturspanne



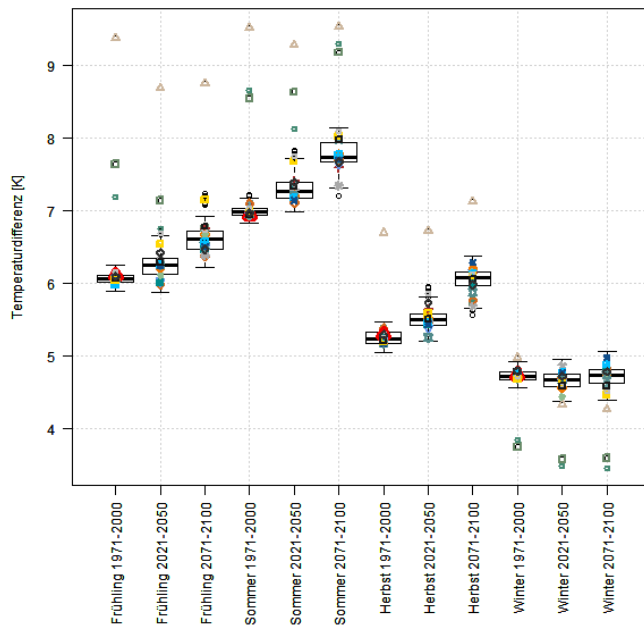
Chemnitz



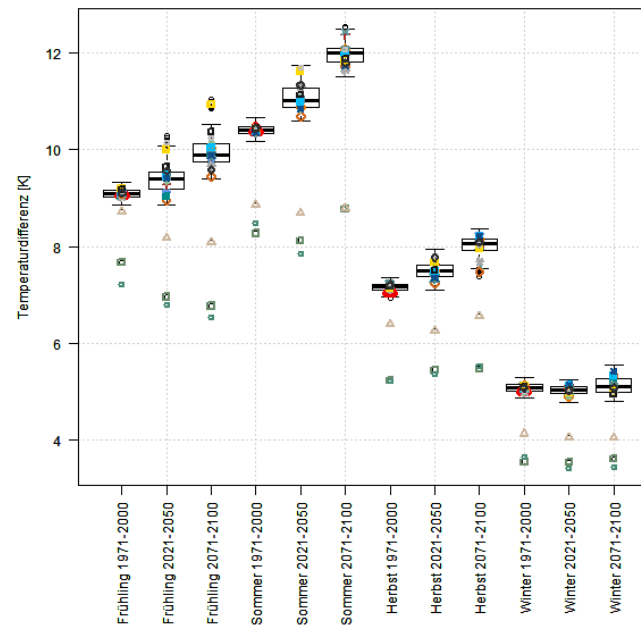
Dresden-Klotzsche



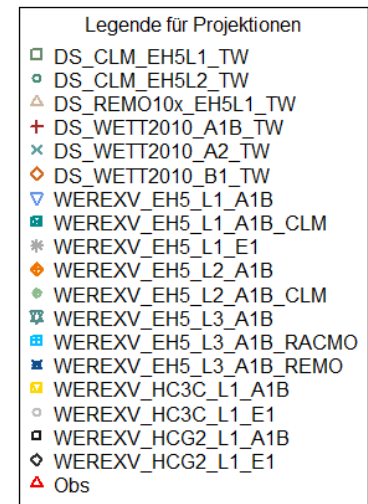
Tägliche Temperaturspanne



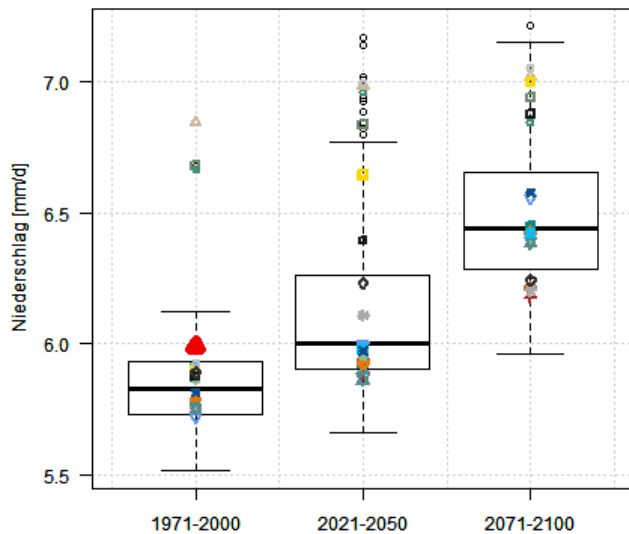
Fichtelberg



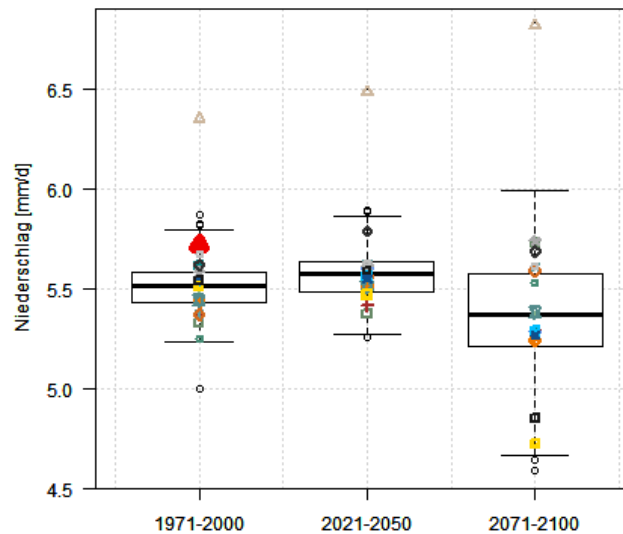
Görlitz



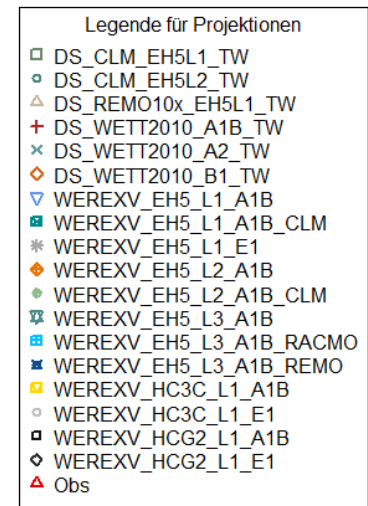
Einfacher Niederschlagsintensitätsindex



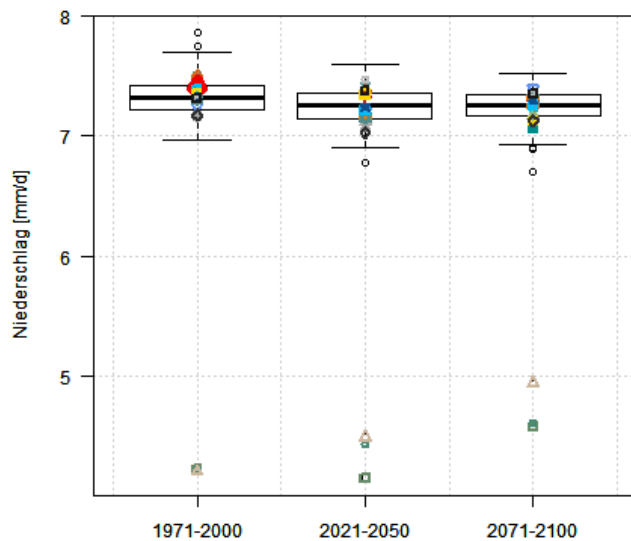
Chemnitz



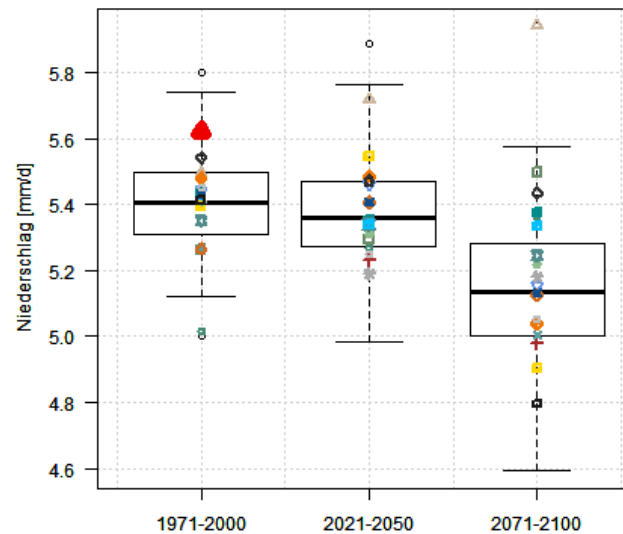
Dresden-Klotzsche



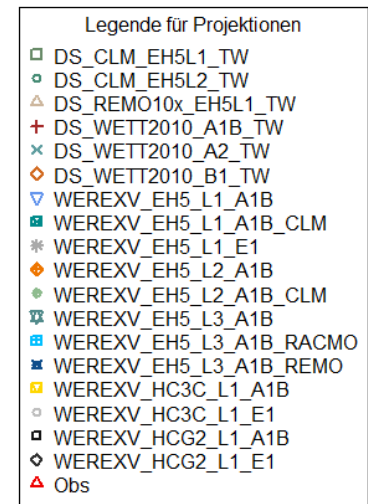
Einfacher Niederschlagsintensitätsindex



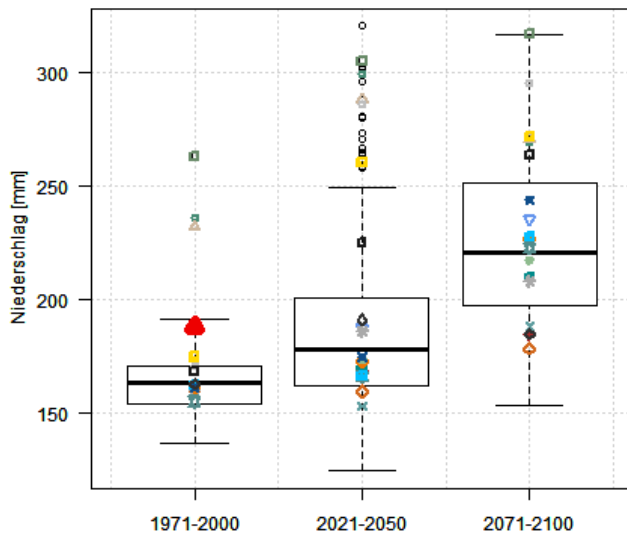
Fichtelberg



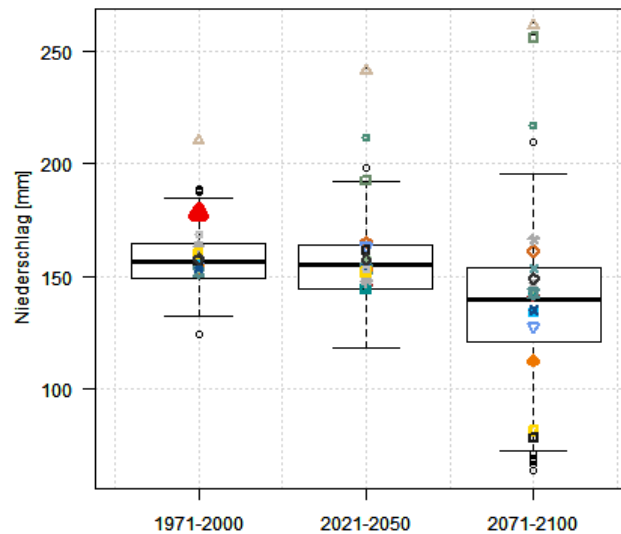
Görlitz



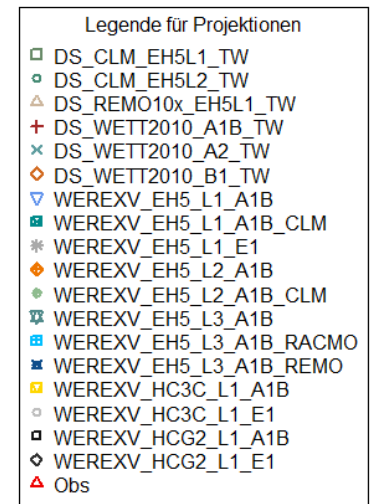
Starkniederschlag (95. Perzentil)



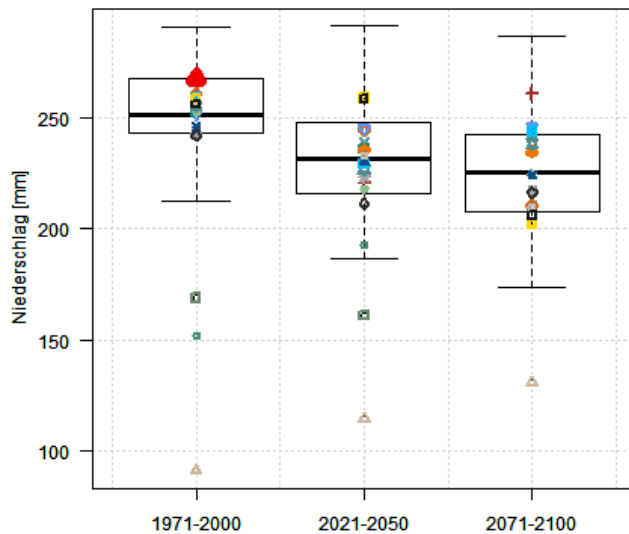
Chemnitz



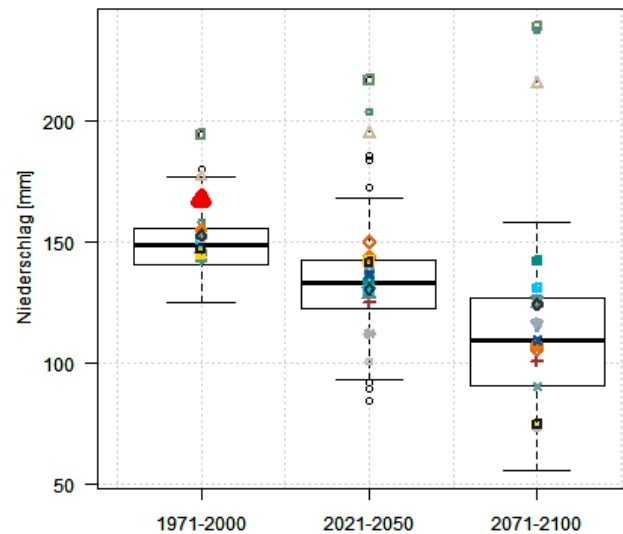
Dresden-Klotzsche



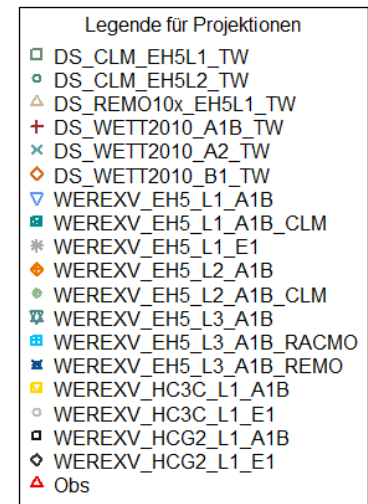
Starkniederschlag (95. Perzentil)



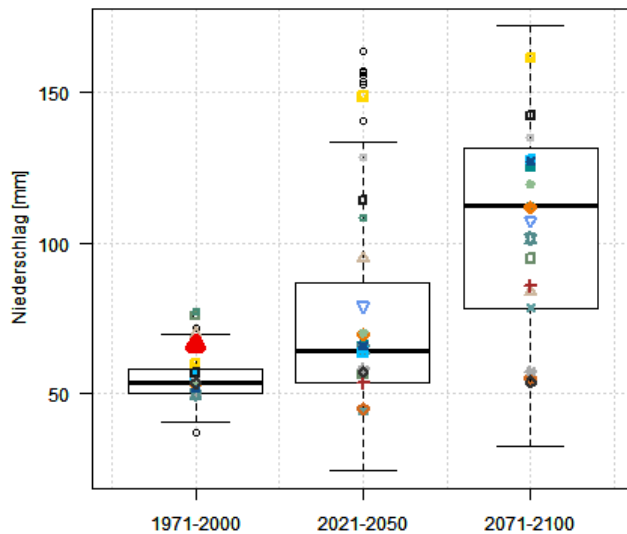
Fichtelberg



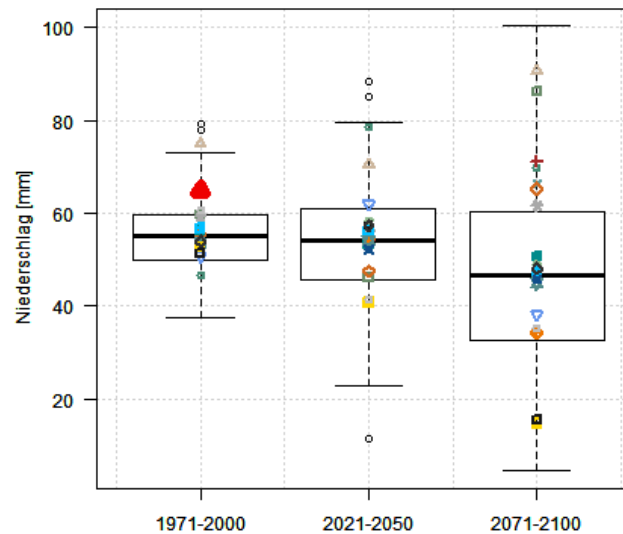
Görlitz



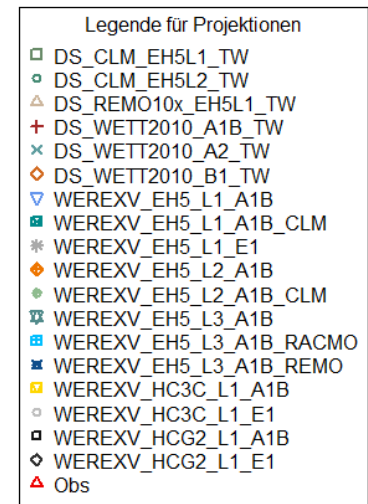
Starkniederschlag (99. Perzentil)



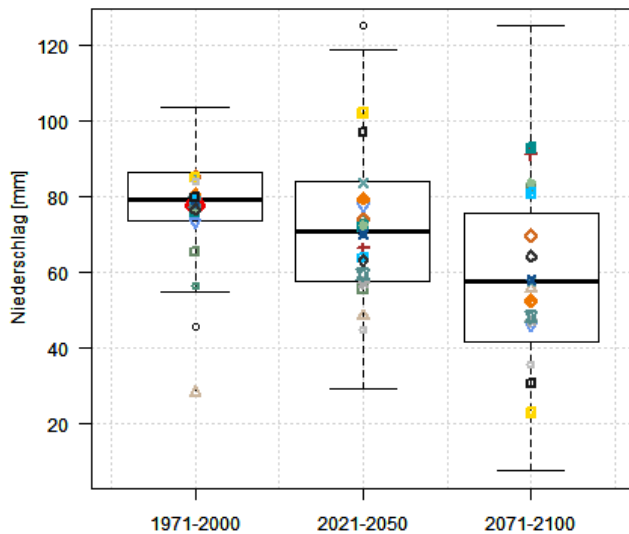
Chemnitz



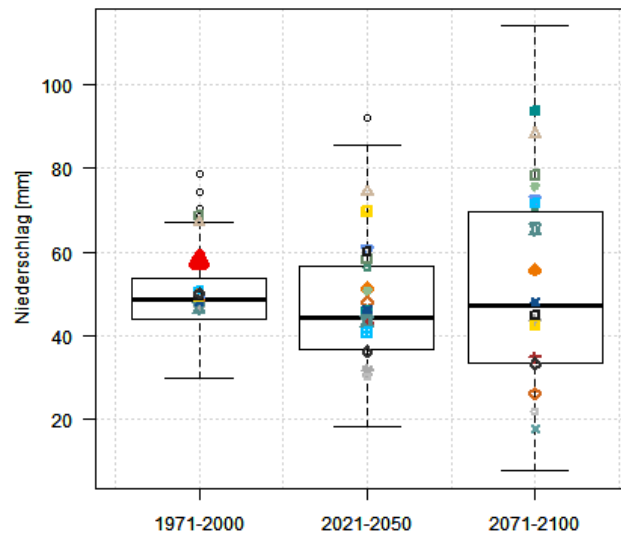
Dresden-Klotzsche



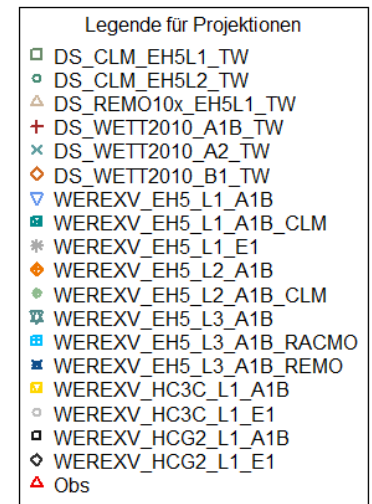
Starkniederschlag (99. Perzentil)



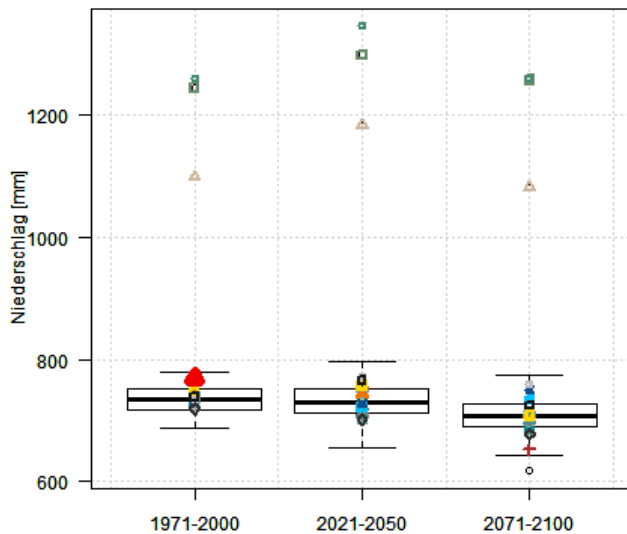
Fichtelberg



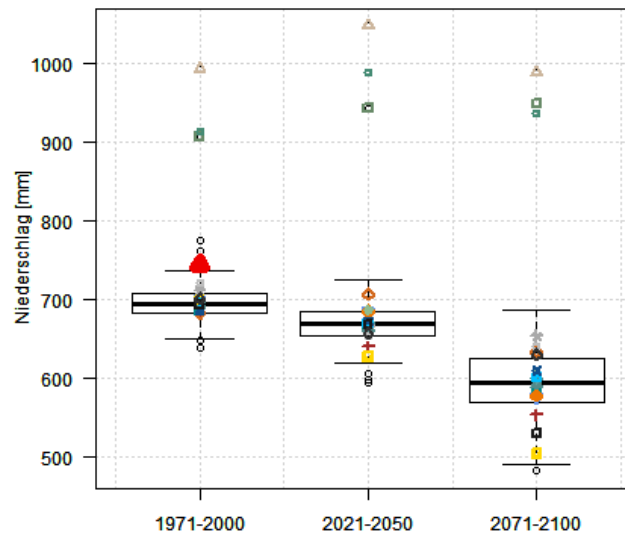
Görlitz



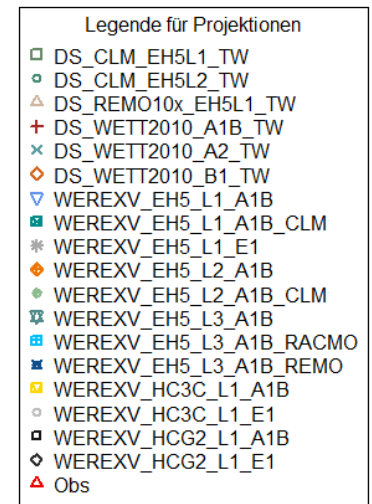
Niederschlagssumme für feuchte Tage



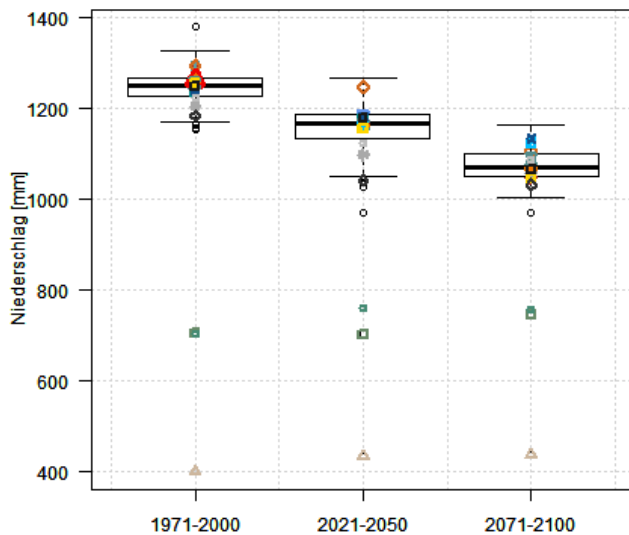
Chemnitz



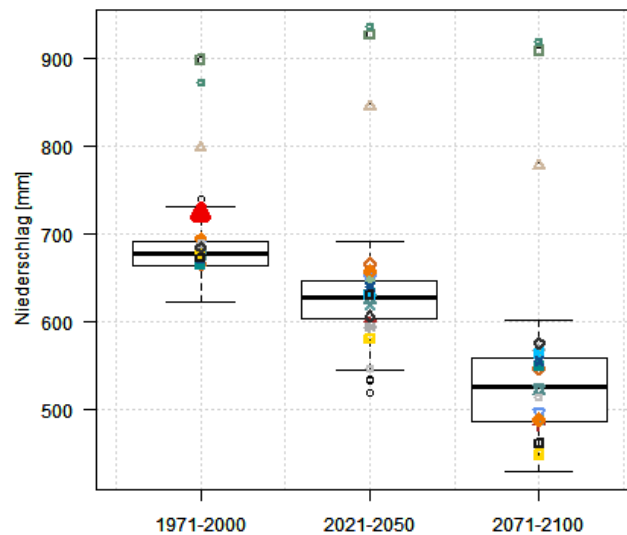
Dresden-Klotzsche



Niederschlagssumme für feuchte Tage



Fichtelberg



Görlitz

